



**COUNTY of VENTURA**  
Agriculture/Weights & Measures

# NEWSLETTER

SEPTEMBER 2024

## IN THIS ISSUE

**PESTICIDE CONTAINERS COLLECTED AT BIENNIAL EVENT**

**THE END OF THE QUEENSLAND FRUIT FLY QUARANTINE**

**GOLDSPOTTED OAK BORER FOUND IN VENTURA COUNTY:  
PROTECTING OUR LOCAL OAKS**

**NATIONAL FARMERS MARKET WEEK: THE BENEFITS OF  
CALIFORNIA CERTIFIED FARMERS MARKETS**

**NAVIGATING ELECTRIC VEHICLE SUPPLY EQUIPMENT REGULATIONS**

**FARM DAY EVENT NOTICE**

**PESTICIDE DISPOSAL EVENT**

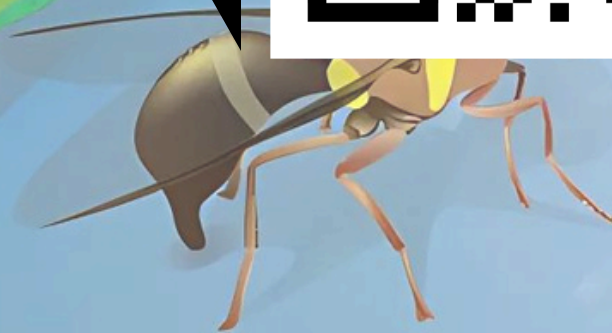


# PESTS *of Ventura County*

**What you need to know!**



S  
C  
A  
N



**County of Ventura**  
**2023 Crop & Livestock Report**

# PESTICIDE CONTAINERS COLLECTED AT BIANNUAL EVENT

ANDY CALDERWOOD  
DEPUTY AG  
COMMISSIONER  
PESTICIDE USE  
ENFORCEMENT

Twice a year, the Ventura County Agriculture/Weights & Measures Office conducts a pesticide container recycling event. Area businesses can drop off pesticide containers free of charge, diverting waste from landfills and reducing disposal costs. This year's first event was Tuesday, April 23, 2024. Growers and pest control businesses dropped off over 12,000 lbs. of high-density polyethylene (HDPE) plastic in the form of used pesticide jugs and barrels. This is the plastic carrying the #2 recycling code. To be accepted in the program, containers must be cleaned by triple rinsing or a method comparable and must have lids removed.

Sacramento-based Interstate Plastics chips the containers on site and takes the pulp to a facility out of county for processing into new HDPE plastic. The next recycling event is Tuesday, October 22, 2024. There will be a Spring 2025 recycling event; when a date is set, the time and location will be posted to our website.





# PESTICIDE CONTAINER RECYCLING EVENT



October 22nd, 2024  
9:00 AM - 3:00 PM



Fruit Growers Supply  
980 W Telegraph Rd  
Santa Paula, CA 93060

**AT NO COST TO  
THE GROWER !**

**By appointment only**



**Contact:**

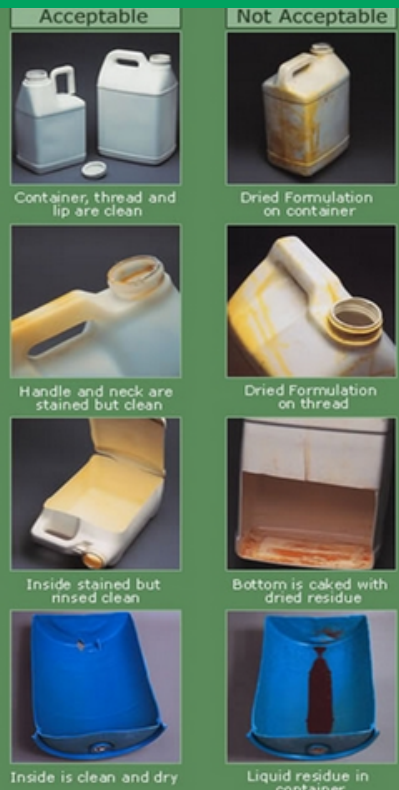
Camarillo Office (805) 388-4222

Santa Paula Office (805) 933-2926

**Review the website for container  
requirements at:**

 <http://www.interstateagplastics.com/>

**Please do not  
drop off your  
containers  
prior to this  
date**



SCAN

**Guidlines Form - English**



ESCANEAR

**Forma de Condiciones -Español**



# THE END OF THE QUEENSLAND FRUIT FLY QUARANTINE



**DAVID WIRTA**  
**DEPUTY AG COMMISSIONER**  
**PEST EXCLUSION**

On July 29, 2024, the successful eradication of the Queensland Fruit Fly (QFF), *Bactrocera tryoni*, in Ventura County was officially declared. This achievement marks the end of a 90-square-mile quarantine, which encompassed Thousand Oaks, parts of Moorpark, and the Santa Rosa Valley.

The successful eradication of this pest can be attributed to the cooperation of state and federal officials, the Ventura County Department of Agriculture/Weights and Measures, farmers, and local residents. Agricultural officials implemented a robust trapping program within the quarantine zone to attract and kill any male QFFs in the area. Farmers within and near the quarantine boundary participated in bait station treatments, which prevented any chance of flies being moved through harvested crops. Residents played their part by refraining from sharing homegrown produce from their properties. The community's cooperation helped prevent an agricultural disaster!

As this was the first QFF quarantine in North America, little was known about the potential impacts and damages it could have caused to California's fresh fruit crops. However, in Australia, QFF is well-documented as a serious agricultural pest. It poses a significant barrier to Australia's ability to participate in international trade of fresh produce. QFF threatens agriculture due to its broad host range, as it is known to infest up to 175 different types of fruit. Combined with high reproduction rates and the difficulty of pesticides in killing maggots burrowed inside infected fruit, the QFF is a formidable challenge.

The exact cause of the introduction of QFF into Ventura County is unknown; however, it is believed that the flies were brought in by international travelers carrying uninspected produce into the county. This serves as a reminder to our entire community that pests do not travel on their own! Most harmful pests are introduced as a result of people moving fruits, vegetables, plants, and other commodities from other countries, states, and even neighboring counties. Everyone can do their part by avoiding the movement of these commodities across borders and by adhering to agricultural laws and quarantines.

If you have any questions about moving plant material or produce, or if you suspect that you have encountered any invasive pests, please contact our department at 805-388-4222 or call the CDFA Pest Hotline at 1-800-491-1899.

# GOLDSPOTTED OAK BORER FOUND IN VENTURA COUNTY: PROTECTING OUR LOCAL OAKS



AMEER ATRASH  
DEPUTY AG COMMISSIONER  
AGRICULTURE CONSUMER PROTECTION

We're reaching out to share an important update with you about a recent discovery in Ventura County that could affect our oak trees. The Goldspotted Oak Borer (GSOB), an invasive pest, was recently detected in our area for the first time. This tiny insect poses a big threat to native oak species, and it's crucial that we work together to protect these trees, which are such an important part of our local environment.

## What is the Goldspotted Oak Borer?

The Goldspotted Oak Borer (*Agrilus auroguttatus*), or GSOB, is a beetle native to southeastern Arizona, but it has found its way into Southern California, and now Ventura County. The adult beetles are small and dark with distinctive gold spots on their wing covers. But it's the larvae that cause the most damage—by feeding beneath the bark of oak trees, disrupting the tree's ability to transport water and nutrients.

The main victims of GSOB are coast live oaks, California black oaks, and canyon live oaks. Once infested, these trees can die within just a few years. You might notice thinning and dieback of crowns, excessive bark staining, and D-shaped exit holes—these are all signs that a tree is battling GSOB.

## How Does GSOB Spread?

One of the biggest ways GSOB spreads to new areas is through the movement of firewood. While it may seem harmless to bring firewood from one location to another, this simple act can carry GSOB larvae with it, introducing the pest to uninfested areas with oaks present. That's why it's so important to buy firewood locally and burn it where you buy it.

## What Can You Do?

We all have a part to play in protecting Ventura County's oak trees from GSOB. Here's how you can help:

- **Buy firewood locally and don't transport it.** This is the best way to prevent the spread of GSOB and other invasive pests.
- **Learn to recognize the signs of an infested oak tree.** If you see trees with noticeable thinning and dieback of crowns, excessive bark staining, or D-shaped exit holes, please contact us.
- **Report GSOB sightings.** If you suspect that GSOB has infested a tree on your property or in a public area, reach out to us immediately. Early detection is key to managing and containing the pest.

For more information on GSOB and how you can help protect our local oaks, visit [gsob.org](http://gsob.org).



Burn Firewood Locally:

# PROTECT OUR OAKS & STOP THE GOLDSPOTTED OAK BORER SPREAD

"Burn It Where You Buy It"



## GSOB

*Goldspotted Oak Borer*

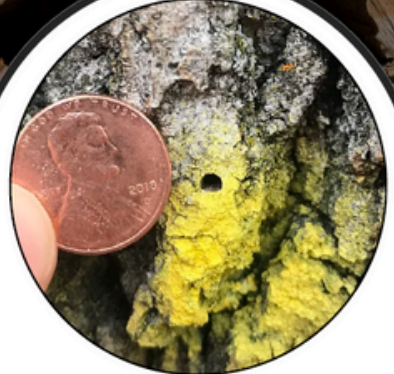
The adult is a small, bullet-shaped beetle about 1/4 in. long and has 6 golden yellow spots on its dark green forewings.



## HOSTS

*California Black Oak, Coast Live Oak, Canyon Live Oak*

These are common oak species around Ventura County and common trees used for firewood.



## EXIT HOLE

They are typically D-shaped and are 3mm in width. The presence of adult exit holes indicates GSOB activity has occurred in that particular area of the tree.

## WHY?

GSOB larvae grow in infested, dying, and dead oak trees, along with logs and firewood from freshly cut trees. To limit the spread of GSOB, it is crucial to handle oak firewood with care. Refrain from moving oak firewood from infested regions to prevent the pest from spreading to new places. Failure to address the larvae in the wood can present an ongoing risk to other oak trees.



SCAN

Goldspotted Oak Borer  
Symptoms Electronic  
Reporting Form

County of Ventura  
Ag/Weights & Measures  
Website



SCAN



**COUNTY of VENTURA**  
Agriculture/Weights & Measures



Visit [gsob.org](http://gsob.org) for more  
information about GSOB

Call us!

Camarillo: 805-388-4222  
Santa Paula: 805-933-2926





# NATIONAL FARMERS MARKET WEEK: THE BENEFITS OF CALIFORNIA CERTIFIED FARMERS MARKETS

AMEER ATRASH  
DEPUTY AG COMMISSIONER AGRICULTURE  
CONSUMER PROTECTION

National Farmers' Market Week, which took place from August 4-10, 2024, was an opportunity to celebrate the vital role farmers' markets play in connecting communities with fresh, locally grown produce. We want to spotlight California Certified Farmers' Markets (CFMs) and explain why they stand apart. Unlike other swap meets, roadside stands, and uncertified markets—where products might be sourced from wholesalers or resellers—CFMs are geared towards providing commodities directly from the farm to your hands.

## What Makes Certified Farmers' Markets Different?

California Certified Farmers' Markets (CFMs) provide a space where you can be confident that you are buying directly from local farmers. These markets are regulated by the California Department of Food and Agriculture (CDFA) and county agricultural commissioners (CACs) to ensure that the commodities sold are grown by the producers themselves. Agricultural officials visit each farm site to inspect and verify that the commodities are indeed grown there. The producer is then issued a Certified Producer's Certificate (CPC) with a list of all their commodities. This certification guarantees that the farmer is the actual grower of the crops, making the connection between consumer and farm transparent and trustworthy. The farmer becomes a Certified Producer and can participate in CFMs. Only Certified Producers may sell in the certified section of a CFM. At the CFM, each stand must display a banner that states, "We grow what we sell."

## What Does Our Office Do?

Our office plays a crucial role in ensuring that CFMs operate with integrity. We work closely with the CDFA to enforce regulations that protect both farmers and consumers. Through inspections and compliance checks, we certify that the products sold are accurately represented, ensuring that when you buy at a CFM, you are truly getting what you pay for. We inspect each market at least twice a year.

## How You Can Get Involved

We encourage you to explore your local CFM and discover the incredible variety of fruits, vegetables, and other products grown right here in California. When you shop at a CFM, you're not only enjoying local agricultural products but also helping to build a stronger, more sustainable agricultural system in California. To learn more about your Ventura County CFM, visit our website to find a map with information in English and Español. If you have any questions about how our office helps maintain the integrity of these markets, feel free to reach out—we're here to ensure that your experience at CFMs is both enjoyable and trustworthy.

SCAN HERE TO VIEW  
VENTURA COUNTY'S CFMS!





# Navigating Electric Vehicle Supply Equipment Regulations

## UNDERSTANDING EVSE REGULATIONS AND OWNERSHIP

New commercial Electric Vehicle Supply Equipment (EVSE) must be:

1. Type Approved - The California Type Evaluation Program (CTEP) Database lists EVSE that are type approved.
2. Placed in Service by a Registered Service Agency or County Sealer of Weights and Measures.
3. Registered and Tested by Ventura County Agriculture/Weights and Measures (VCAWM)

### EXEMPTIONS:

- AC EVSE: Units in service before January 1st, 2021, are exempt until January 1st, 2031.
- DC EVSE: Installations prior to January 1st, 2023, are exempt until January 1st, 2033, or until replaced by new EVSE meters.
- Free Workplace/Non-Commercial EVSE

## FOR MORE QUESTIONS

### EMPOWERING ELECTRIC VEHICLE SUPPLY EQUIPMENT GROWTH

As EVSEs rapidly expand, VCAWM must ensure that the EVSEs are accurate, the equipment is Type Evaluated (certified for commercial purposes), and installed by a licensed registered service agent.

### WHO REGULATES EVSE?

California Department of Agriculture-Division of Measurement Standards (CDFA-DMS) and County Agriculture/Weights and Measures Departments (AWM) in California regulate EVSE. All commercial EVSE must be registered and tested by VCAWM unless they are exempt.

### APPLICATIONS EXEMPT FROM REGULATION

- Public Utilities
- Non-Commercial and Workplace Charging
- Free Electricity Dispensing Wholesale
- Electricity Delivery



# Navegando las regulaciones de equipos de suministro de vehículos eléctricos

## COMPRENDIENDO LAS REGULACIONES Y LA TITULARIDAD

El nuevo equipo de suministro de vehículos eléctricos comerciales debe ser:

1. Aprobado por la base de datos del programa de evaluación de tipo de California
2. Puesto en servicio por una agencia de servicio registrada o un sellador de pesos y medidas del condado.
3. Probado por el departamento de Agricultura/Pesos y Medidas del condado de Ventura

### EXENCIONES:

- Equipo de corriente alterna: los equipos puestos en servicio antes del 1 de enero de 2021 están exentas hasta el 1 de enero de 2031.
- Equipo de corriente continua: Las instalaciones realizadas antes del 1 de enero de 2023 están exentas hasta el 1 de enero de 2033 o hasta que sean reemplazadas por nuevos medidores.
- Equipo gratuito de suministro de vehículos eléctricos que no son comerciales y localizados en el lugar de trabajo.

## PARA MÁS INFORMACIÓN

### POTENCIAR EL CRECIMIENTO DE EQUIPOS DE SUMINISTRO DE VEHÍCULOS ELÉCTRICOS

El departamento de Agricultura/Pesos y Medidas del condado de Ventura debe garantizar que los equipos de suministro de vehículos eléctricos sean precisos, que el equipo tenga un tipo evaluado (certificado para usos comerciales) y que lo instale un agente de servicio registrado y autorizado.

### ¿QUIÉN REGULA LOS EQUIPOS DE SUMINISTRO DE VEHÍCULOS ELÉCTRICOS?

La División de Normas de Medición del Departamento de Agricultura de California y los departamentos de Agricultura/Pesos y Medidas de los condados en California regulan el equipo. Todos los equipos comerciales deben estar registrados y probados por el departamento de Agricultura/Pesos y Medidas del condado de Ventura al menos que estén exentos.

### APLICACIONES EXENTAS DE REGULACIÓN

- Servicios Públicos
- Estaciones de carga que no son comerciales y localizados en el lugar de trabajo
- Dispensador de electricidad gratis
- Entrega de electricidad al por mayor







COME  
Visit Us!

815 E. Santa Barbara Street  
Santa Paula, CA 93060

# WE ARE PARTICIPATING IN SEEAG'S 2024 FARM DAY!

NOVEMBER 2, 2024  
10 am to 3 pm



## Learn what we do & why

Our Mission is to protect and promote agriculture and equity in the marketplace, while ensuring the welfare of the public, the industry and the environment. We do this by enforcing federal, state and local laws, regulations, and ordinances.



## Meet some of our valuable staff

Engaging with the staff ensures you receive reliable, up-to-date information and professional advice that directly benefits farming operations and the community.



## Discover the importance of Agriculture

In Ventura County, agriculture is crucial as it provides essential food, supports local economies, and creates jobs.







**COUNTY of VENTURA**  
Agriculture/Weights & Measures

# Need to dispose of pesticides?

SCAN ME



## Join our interest list!





**KORINNE BELL**  
Agricultural Commissioner

**JOHN BEALL**  
Deputy /Sealer - Weights & Measures

**GRETA VARIEN**  
Chief Deputy

**ANDY CALDERWOOD**  
Deputy - Pesticide Use Enforcement

**DAVID WIRTA**  
Deputy - Pest Exclusion

**AMEER ATRASH**  
Deputy -Agriculture & Consumer Protection

EDITORS

**MARLENE RIDGE**  
**BROOKE PERRY**

ASSISTANT EDITORS

**MIRIAM MENDEZ**  
**JACKIE YEPEZ**